



GOVERNMENT OF THE PEOPLE'S REPUBLIC OF BANGLADESH

SMALL AREA ATLAS

BANGLADESH

MEHERPUR ZILA



BANGLADESH BUREAU OF STATISTICS (BBS)
STATISTICS AND INFORMATICS DIVISION (SID)
MINISTRY OF PLANNING

SMALL AREA ATLAS OF BANGLADESH

MAUZAS AND MAHALLAS OF MEHERPUR ZILA

November, 2015



BANGLADESH BUREAU OF STATISTICS (BBS)
STATISTICS AND INFORMATICS DIVISION (SID)
MINISTRY OF PLANNING
GOVERNMENT OF THE PEOPLE'S REPUBLIC OF BANGLADESH

EDITORIAL COMMITTEE

CONVENOR

Md. Baitul Amin Bhuiyan

Deputy Director General
Bangladesh Bureau of Statistics

MEMBERS

Dr. Amanat Ullah Khan	Professor, Department of Geography and Environment, University of Dhaka
Dr. Md. Shahedur Rashid	Professor, Department of Geography and Environment, Jahangirnagar University
Md. Solaiman Mondol	Deputy Secretary, SID
Md. Shofiqur Rahman	Deputy Director, Survey of Bangladesh
Suraiya Jahan	Charge Officer, Department of Land Records and Surveys
Md. Zahidul Hoque Sardar	Project Director, Strengthening Capacity of BBS in Population and Demographic Data Collection using GIS Project, BBS
Md. Nazrul Islam	Director, Computer Wing, BBS
Md. Mashud Alam	Project Director, Population and Housing Census-2011, BBS
A.S.M Quamruzzaman	Deputy Director, BBS
Md. Maksud Hossain	Statistical Officer, BBS
Md. Abubakar Siddique	Cartographer, BBS, Member Secretary



Minister
Ministry of Planning
Government of the People's Republic of Bangladesh

Message

It is a great pleasure to know that the Small Area Atlas prepared by Bangladesh Bureau of Statistics (BBS) is being published. The government of Bangladesh undertook on array of steps across Bangladesh as a milestone to achieve the goals articulated in the "Digital Bangladesh" agenda, on delivering services to citizens' doorsteps. I think, this Atlas will be a useful document considering the information of mauza level, which has been prepared for improving the overall administrative and social well-being of Bangladesh as a nation.

The Hon'ble Prime Minister of Bangladesh introduced the concept of 'Digital Bangladesh' in 2008. The Small Area Atlas is produced using Geographic Information System technology which will hopefully help in evidence-based policy formulation to achieve the targets in education, health, job creation and poverty reduction. This Atlas published back in 1986 contained 17 zilas but now the whole country is segmented into 64 zilas and 11 City Corporations. It needs to be highlighted that it is after 28 years, Bangladesh Bureau of Statistics (BBS) and Statistics and Informatics Division (SID) took up the commendable initiative in compiling data and information of mauzas/mahallahs as accurately as possible so that the local and national level elected representatives/administrators can make pragmatic decisions on socio-economic development. Small Area Atlas with updated geocode will be an important document to integrate and disseminate the geospatial data to the users at different levels, and to achieve the vision 2021 and 'Digital Bangladesh'.

It is praiseworthy that BBS under the active guidance of Statistics and Informatics Division (SID) has prepared the Atlas. I am confident that the policy makers, planners, researchers, development partners, any entities related with these activities and other stakeholders will find this Atlas very useful.

Let me take this opportunity to extend my heartfelt thanks to Kaniz Fatema ndc, Secretary, Statistics and Informatics Division (SID), Mohammad Abdul Wazed, Director General, Bangladesh Bureau of Statistics (BBS) and all other relevant officials of SID and BBS for their relentless efforts in publishing the Atlas.

Dhaka: November, 2015


AHM Mustafa Kamal, FCA, MP



State Minister
Ministry of Finance & Ministry of Planning
Government of the People's Republic of Bangladesh

Message

I am glad to learn that the Bangladesh Bureau of Statistics (BBS), under the Statistics and Informatics Division (SID) of Ministry of Planning, Government of Bangladesh, has initiated the task of publishing the Small Area Atlas (SAA) in 2014. In Bangladesh, huge geospatial data are available with various public and private sector organizations. The major part of this data is being produced by public sector organizations to facilitate their mandated responsibilities.

This trend indicates that every year the demand for Maps and Geospatial data is growing in Bangladesh. Prominent organizations of Bangladesh are using GIS facilities in their respective fields of application. According to the Statistics Act, 2013, Bangladesh Bureau of Statistics (BBS) is the authorized body to compile & disseminate such data.

Among others, Small Area Atlas is the main platform for geospatial information integration. I am confident that this Atlas will further strengthen the efforts of the Government of Bangladesh, towards building a 'Digital Bangladesh', using the latest information and communication technology. The Small Area Atlas will help integrate the geospatial data with other statistical data, which will help make sustainable development policy for Bangladesh. This Atlas will also benefit all administrative units, planners, researchers, development partners and interested citizens of Bangladesh. I hope, in the near future, this Atlas will become a repository of data and information that will meet the needs of people across the country.

In this context, let me record my appreciation of the leadership of Ms. Kaniz Fatema ndc, Secretary, Statistics and Informatics Division (SID) and her colleagues who have all contributed to the completion of this difficult task. I would like to extend my special thanks to everyone in the SID and BBS and wish them continued success.

Dhaka: November, 2015


M A Mannan, MP



Secretary

Statistics and Informatics Division (SID)

Ministry of Planning

Government of the People's Republic of Bangladesh

Foreword

Bangladesh Bureau of Statistics (BBS), the National Statistical Organization (NSO), is responsible for collecting and disseminating of statistics on population, demography, economics, as well as on other social indicators and trends of the country's growth and development. Conducting Population and Housing Census is one of the core activities of BBS. Census data are mainly used for planning and policy making at the national and sub-national levels though these are widely used for poverty alleviation interventions and initiatives towards improvement of the people's quality of life.

BBS conducted the 5th decennial census of the country during March 15-19, 2011. The preliminary report of the census was brought out in July 2011 and community reports for 64 zilas were released electronically in July 2012. As a national statistical entity, BBS has embarked upon the comprehensive task of developing statistics with geospatial information.

This initiative aims to develop upazila level Small Area Atlas showing details of existing mouzas based on Census 2011. I hope, in future BBS will publish a detailed map Atlas of Bangladesh particularly at union and mauza/mahallahs level. However, the Atlas will act as an important tool for geospatial information and will help BBS and other users in data collection for developing local level statistics. Moreover, this maps will help in strategic planning, resource mobilization and management of day-to-day operations for various development programmes at the grass-roots level.

Let me take the privilege to thank UNFPA for providing financial and technical support to GIS Project of BBS under which this Atlas is prepared. I also thank the working group comprising relevant experts from Government of Bangladesh, Research Organizations and International Organizations for their technical backstopping in preparing the maps and preparing the Atlas. I would like to express my sincere thanks to the Director General of BBS, Project Director, GIS and his team for their sincere efforts in successful completion of this tedious job. Thanks are also due to the distinguished members of the Technical Committee for their valuable guidance in finalization of the Small Area Atlas.

Dhaka: November, 2015


Kaniz Fatema ndc



Director General
Bangladesh Bureau of Statistics (BBS)
Statistics and Informatics Division (SID)
Ministry of Planning
Government of the People's Republic of Bangladesh

Preface

Small Area Atlas of Bangladesh showing location of mauzas and mahallahs of rural and urban areas is the outcome of the Nationwide Geocoding system developed by the Bangladesh Bureau of Statistics. The Atlas is published in 75 volumes one for each of the zilas and city corporations. To make it user friendly, the atlas contains 2 guide maps viz: one national map and one district maps at the beginning. Definition of the various terms used in the atlas and a description of the Geocode system have been provided in the Atlas. Each volume of the Atlas will contain the maps of all Mauzas in the zila arranged by Upazilas and Unions so that the mauzas can be compared among each other in terms of their physical size. Moreover, corresponding tables of selected statistical information relating to Household, Population size and Area for each mauza arranged again by unions and upazilas have also been included. For easy linkage, the related tables have been placed opposite to the maps. The household and population figures related to 2011 Population and Housing Census and mauza or mahallah areas have been given on the basis of the latest estimates.

In some cases, mauza area need to be estimated directly from maps with the help of GIS technology. In addition to mauzas, the Atlas provides separate maps for each of the paurashava located in the zila. The paurashava maps show the boundaries of the paurashava and location of wards and mahallahs within each paurashava. Thus, by totaling the mauza and paurashava areas, it is possible to arrive at the total area of the zila and hence the total area of Bangladesh.

I am grateful to UNFPA for their technical and financial assistance and to the representatives of universities, research organizations for their technical guidance in preparing the atlas and in conducting the field verification.

Let me also extend my earnest thanks to Md. Zahidul Hoque Sardar, Project Director, A.S.M Quamruzzaman, Deputy Director, Md. Maksud Hossain, Statistical Officer, Md. Abubakar Siddique, Cartographer and other colleagues of GIS project of BBS for preparing the Small Area Atlas and for bringing out this Atlas. The members of the editorial committee deserve special thanks for their input in the technical improvement of the Atlas.

I am sure, the Small Area Atlas will be useful to the planners, administrators, researchers, policy makers and development partners to meet their crying need for map for small areas of the country. Any constructive suggestions for further improvement of the report will be appreciated.

Mohammad Abdul Wazed

Dhaka: November, 2015



Representative
UNFPA Bangladesh

Message

The information generated by a population and housing census, such as numbers of people, their distribution, their living conditions, as well as geo-spatial data, is critical for development –because without accurate data, policy makers and law makers would not know where and how much to invest for example for hospitals, schools and infrastructure. Planning, implementation and monitoring of the activities intended for improving the quality of people’s lives, thus requires most up-to-date and detailed data. Such data uncovers inequalities and inequities in terms of health, education, employment and wealth and shows where the poorest, most marginalized, most excluded live so that they can be reached out to.

This is why UNFPA globally assists the national efforts at building and sustaining capacities for knowledge management and data/statistics systems, especially for integrating population dynamics into planning and monitoring. The world leaders at the 2014 Special Session of the UN General Assembly on the International Conference on Population and Development (ICPD) reaffirmed the continued relevance of the ICPD Plan of Action and endorsed the SG’s proposed program beyond 2014. In Bangladesh, UNFPA has been supporting the Bangladesh Bureau of Statistics (BBS) with conducting population censuses and generating useful reports and secondary analyses since 1974. With UNFPA’s technical and financial support BBS has conducted the last four population and housing censuses and established the GIS Lab, the latter is involved in upgrading the digital Mouza maps used for Population and Agricultural censuses and for disaster management and health services delivery planning.

In this regard, I would like to congratulate the BBS on the successful publication of the District and Upazila Small Area Atlas using the 2011 Population and Housing Census data, presenting those maps in a user friendly manner. It is noteworthy that BBS has produced the Small Area Atlas using its own Geographic Information System (GIS) capacity. We look forward to seeing the new Small Area Atlas being used in future surveys for accurately defining the samples and locations, as well as in local level planning, project implementation and results monitoring by central and local officials in their day-to-day operations. These atlases will be critical for a proper forecasting and provision of timely and life-saving support to victims of natural and man-made disasters.

I would like to express our gratitude to the European Union for providing financial assistance to UNFPA, without which this might not have been possible.

Dhaka: November, 2015

Argentina Matavel Piccin
Representative
UNFPA Bangladesh



Project Director
P&D Using GIS Project
Bangladesh Bureau of Statistics (BBS)
Statistics and Informatics Division (SID)
Ministry of Planning

Acknowledgements

I feel delighted to acknowledge the active role of officials concerned in undertaking the exercise for preparation of Small Area Atlas. It is worth-mentioning that the staff members of BBS have professionally and successfully completed the Atlas by overcoming all the challenges.

I would like to express my humble gratitude and thanks to Kaniz Fatema ndc, Secretary, Statistics and Informatics Division (SID), Mohammad Abdul Wazed, Director General, Bangladesh Bureau of Statistics, M.A. Mannan Howlader, Additional Secretary (Development), Statistics and Informatics Division (SID), for their valuable suggestions, patient guidance and all-out support for completion of the Small Area Atlas.

It is my immense pleasure to mention that UNFPA Bangladesh has provided support to prepare the Small Area Atlas. I wish to thank UNFPA for their partnership in statistical activities of BBS.

I am particularly grateful to A.S.M Quamruzzaman, Deputy Director, Md. Maksud Hossain, Statistical Officer, Abubakar Siddique, Cartographer, Md. Firoz Ahmed Sarder, Asst. Statistical Officer, Md. Saiful Hoque, Asst. Cartographer, Md. Arshed Ali, Computer Operator, Md. Emdadul Hoque, Computer Operator, Md. Ruhul Amin, Draftsman and other GIS Project Officials who were the active members of the Small Area Atlas team.

Let me express my deepest gratitude to Rezaul Roni, Consultant and Assistant Professor, Department of Geography and Environment, Jahangirnagar University, who gave his full effort in producing the Atlas. My great appreciation is due to the members of the project management team of Strengthening Capacity of BBS in Population and Demographic Data Collection using GIS Project for their relentless efforts in this exercise.

I am deeply indebted to various stakeholders and agencies concerned who always provided their valuable suggestions and comments for successful completion of the Atlas and data collection from field.

Hope, users and readers will continue to forward their suggestions and comments for further improvement of this document.

Dhaka: November, 2015


Md. Zahidul Hoque Sardar

ACRONYMS

BBS	Bangladesh Bureau of Statistics
DLRS	Department of Land Records and Surveys
EA	Enumeration Area
EU	European Union
Geocode	Geographic Area Code
GIS	Geographical Information System
GoB	Government of Bangladesh
GPS	Global Positioning System
H/H	Household
HQ	Headquarter
JL No	Jurisdiction List Number
MDG	Millennium Development Goals
NDC	National Defence College
NGO	Non-Government Organization
NSO	National Statistical Organization
P&D	Population and Demographic
POP ⁿ	Population
SID	Statistics and Informatics Division
SOB	Survey of Bangladesh
UNFPA	United Nations Population Fund
VIZ	Videlicet

The User’s Guide

Bangladesh Bureau of Statistics (BBS) is the national statistical organization responsible for collection, compilation and dissemination of statistical data relating to a wide variety of subjects, collected through regular and adhoc census and surveys. The Small Area Atlas (herein after referred to as the “Atlas”), begins with the location/area map of the Zila, which includes the location/area maps of the Upazilas within the Zila. The Upazila maps include the Unions and the Unions include the Mauzas. The Atlas goes on to provide the location/area maps of different Paurashavas and Wards within them. The attached tables provide demographic and other statistical data in detail.

The spatial data and the administrative boundaries of different hierarchies have been obtained from the Survey of Bangladesh (SOB) and the Department of Land Records and Surveys (DLRS). The attribute/statistical data relating to the same areas are often collected at different times through different censuses and surveys. A Standard Geographic Area Coding (Geocode) System has been developed view to identify the location/area uniquely and link all data series on a given location/area. The Standard Geocode is essential for integrated database system development.

Geocode System

Geocode (as mentioned above) stands for “Geographic Area Code”, is a unique numerical address of a geographic area. The first step towards developing a Geocode is to prepare a list of all administrative areas and their sub-divisions in order of administrative hierarchy. For the purposes of this Atlas, BBS has alphabetically arranged all areas within each hierarchy and their assigned codes.

Geocoding scheme for the allocation of specific number of digits to different levels of Administrative areas is shown below:

Division	×× 2 digits
Zila	×× 2 digits
Upazila/Thana/Paurashava/City Corporation	×× 2 digits
Union/Ward	×× 2 digits
Mauza/Mahallah	××× 3 digits

To identify a Mauza a 11 digit Geocode is required, for example 30-39-15-51-419 is the Geocode for Dangdahra Mauza. The first two digits identify the division -Dhaka, 3rd and 4th digits identify the Zila - Jamalpur, 5th and 6th digits identify the Upazila/Thana-Dewanganj, 7th and 8th digits identify the Union/Ward -Dangdhara and finally the last 3 digits 9th to 11th identify the Mauza/Mahallah -Dangdhara.

Concepts and Definitions of Different Administration areas:

Division Division is the highest administrative unit of Bangladesh comprising several Zilas. Bangladesh has 7 divisions in 2011.

Zila: Zila (Bengali word of District) is a mid-level administrative unit comprising several upazilas/thanas and having Zila Parishad institution. In 2011, there are 64 Zilas in the country.

Upazila: Upazila (Bengali word of Sub-district) is a rural administrative unit comprising of several unions and having Upazila Parishad institution. There are 486 Upazilas in the country as in 2011.

Thana: Most of the time each upazila have same thana but sometimes there are many upazila comprising of several thanas. Also thana is known as Police Station and there are 624 thanas in the country as in 2011.

City Corporation: It is administered by the Ministry of Local Government under City Corporation Act, 2009. There were 6 City Corporations in 2011 now the number of city corporation is 11 in the country.

Paurashava: It includes paurashavas incorporated and administered by local government under Paurashava Ordinance, 1977. Currently there are 316 Paurashavas in the country.

Ward: Smallest administrative urban Unit of the Paurashava comprising mahallahs and having Ward Council institution.

Union: Smallest administrative Unit of rural areas outside Municipality comprising several mauzas (or villages; the union is divided generally into 3 wards for administrative purpose). It has a Union Parishad (council). As on 2011, there were 4571 Unions in the country.

Mauza: Lowest administrative unit having a separate jurisdiction list number (JL No) in revenue records. Every mauza has its well-demarcated cadastral map. Mauza should be distinguished from local village since a mauza may consist of one or more villages. There are about 56348 mauzas in the country distributed among both the rural and urban areas.

Mahallah: The smallest identifiable area under the City Corporations/Paurashavas. For the purpose of Geocode it is treated as equivalent to Mauza. To demarcate the Mahallah clearly, some marginal adjustments in boundary was necessary in some cases. These Mahallahs may be considered more appropriately as Statistical Mahallahs.

Contents

	Page
Message from Minister	iii
Message from State Minister	v
Foreword	vii
Preface	ix
Message from UNFPA	xi
Acknowledgements	xiii
Acronyms	xv
The User's Guide	xvi-xvii
Geocode Index Maps	
National Map showing Location of Meherpur Zila (Geocode 57)	4-5
Zila Map Showing Location of Upazilas and Unions	6-7
Upazila Geocode Maps	
Gangni Upazila (Geocode 47)	10-11
Mujib Nagar Upazila (Geocode 60)	12-13
Meherpur Sadar Upazila (Geocode 87)	14-15
Paurashava Geocode Maps	
Gangni Paurashava (Geocode 22)	18-19
Meherpur Sadar Paurashava (Geocode 33)	20-21

Geocode Index Maps

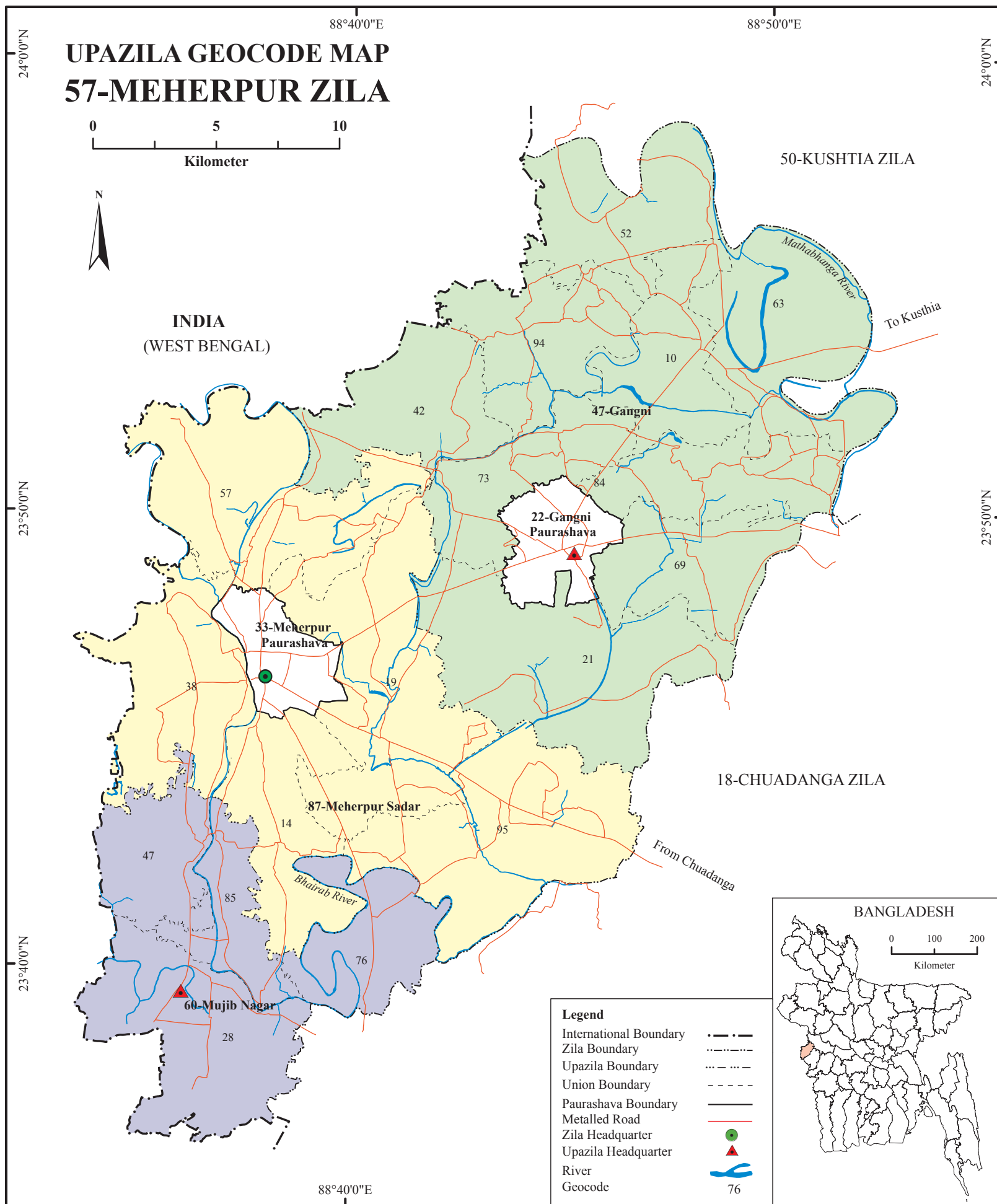
LIST OF ZILA GEOCODE

Division Code	Division Name	Zila Code	Zila Name
10	Barisal	04	Barguna
		06	Barisal
		09	Bhola
		42	Jhalokati
		78	Patuakhali
		79	Pirojpur
20	Chittagong	03	Bandarban
		12	Brahmanbaria
		13	Chandpur
		15	Chittagong
		19	Comilla
		22	Cox's Bazar
		30	Feni
		46	Khagrachhari
		51	Lakshmipur
		75	Noakhali
		84	Rangamati
30	Dhaka	26	Dhaka
		29	Faridpur
		33	Gazipur
		35	Gopalganj
		39	Jamalpur
		48	Kishoreganj
		54	Madaripur
		56	Manikganj
		59	Munshiganj
		61	Mymensingh
		67	Narayanganj
		68	Narsingdi
		72	Netrakona
		82	Rajbari
		86	Shariatpur
		89	Sherpur
		93	Tangail

Division Code	Division Name	Zila Code	Zila Name
40	Khulna	01	Bagerhat
		18	Chuadanga
		41	Jessore
		44	Jhenaidah
		47	Khulna
		50	Kushtia
		55	Magura
		57	Meherpur
		65	Narail
		87	Satkhira
50	Rajshahi	10	Bogra
		38	Joypurhat
		64	Naogaon
		69	Natore
		70	Chapai- Nawabganj
		76	Pabna
		81	Rajshahi
		88	Sirajganj
		27	Dinajpur
		32	Gaibandha
55	Rangpur	49	Kurigram
		52	Lalmonirhat
		73	Nilphamari
		77	Panchagarh
		85	Rangpur
		94	Thakurgaon
60	Sylhet	36	Habiganj
		58	Maulvibazar
		90	Sunamganj
		91	Sylhet

57-MEHERPUR ZILA ATTRIBUTES
(UPAZILA, UNION GEOCODE, AREA, HOUSEHOLD AND POPULATION)

UPAZILA CODE	UNION CODE	NAME	AREA (Acres)	HOUSEHOLD	POPULATION
47		Gangni Upazila Total	83813	77580	299607
47	22	Gangni Paurashava	4238	6488	25500
47	10	Bamandi Union	7216	6719	26776
47	21	Dhankhola Union	15034	10793	41332
47	42	Kathuli Union	8211	5850	22379
47	52	Kazipur Union	8771	10152	39811
47	63	Matmura Union	11709	11446	44609
47	69	Roypur Union	6214	5433	20665
47	73	Shaharbat Union	6984	6082	23139
47	84	Shola Taka Union	7046	6431	24533
47	94	Tentulbaria Union	8390	8186	30863
60		Mujib Nagar Upazila Total	28044	24602	99143
60	28	Bagoan Union	11204	9848	39707
60	47	Dariapur Union	5816	4962	19629
60	76	Mahajanpur Union	6400	4691	19127
60	85	Monakhali Union	4624	5101	20680
87		Meherpur Sadar Upazila Total	64397	64130	256642
87	33	Meherpur Paurashava	3366	10418	43133
87	14	Amda Union	8116	7611	30600
87	19	Amjhupi Union	15486	14011	54586
87	38	Buripota Union	9920	9331	37458
87	57	Kutubpur Union	13556	11089	42511
87	95	Pirojpur Union	13953	11670	48354
		Meherpur Zila Total	176254	166312	655392

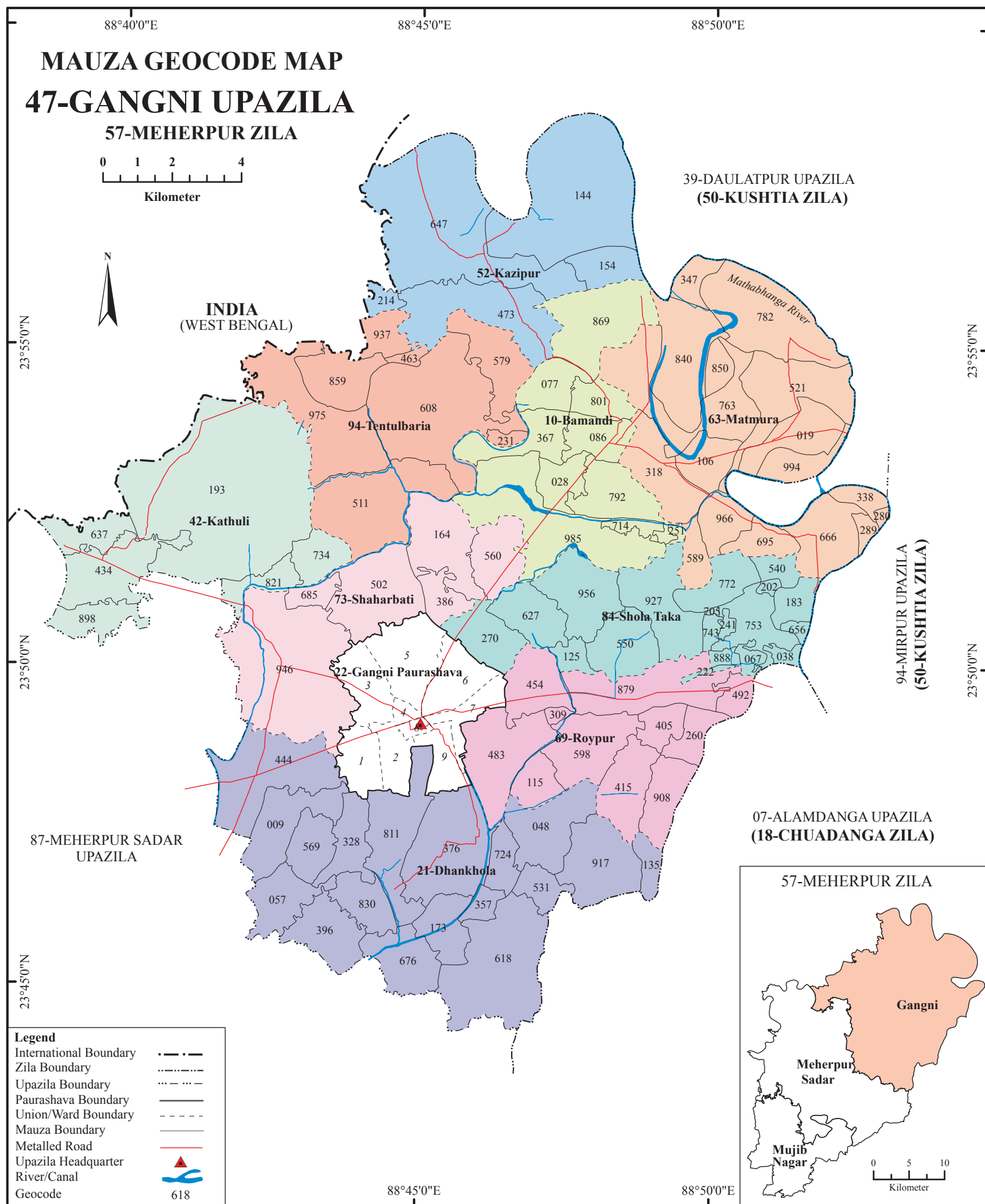


Upazila Geocode Maps

47-GANGNI UPAZILA ATTRIBUTES
(UNION, MAUZA GEOCODE, AREA, HOUSEHOLD AND POPULATION)

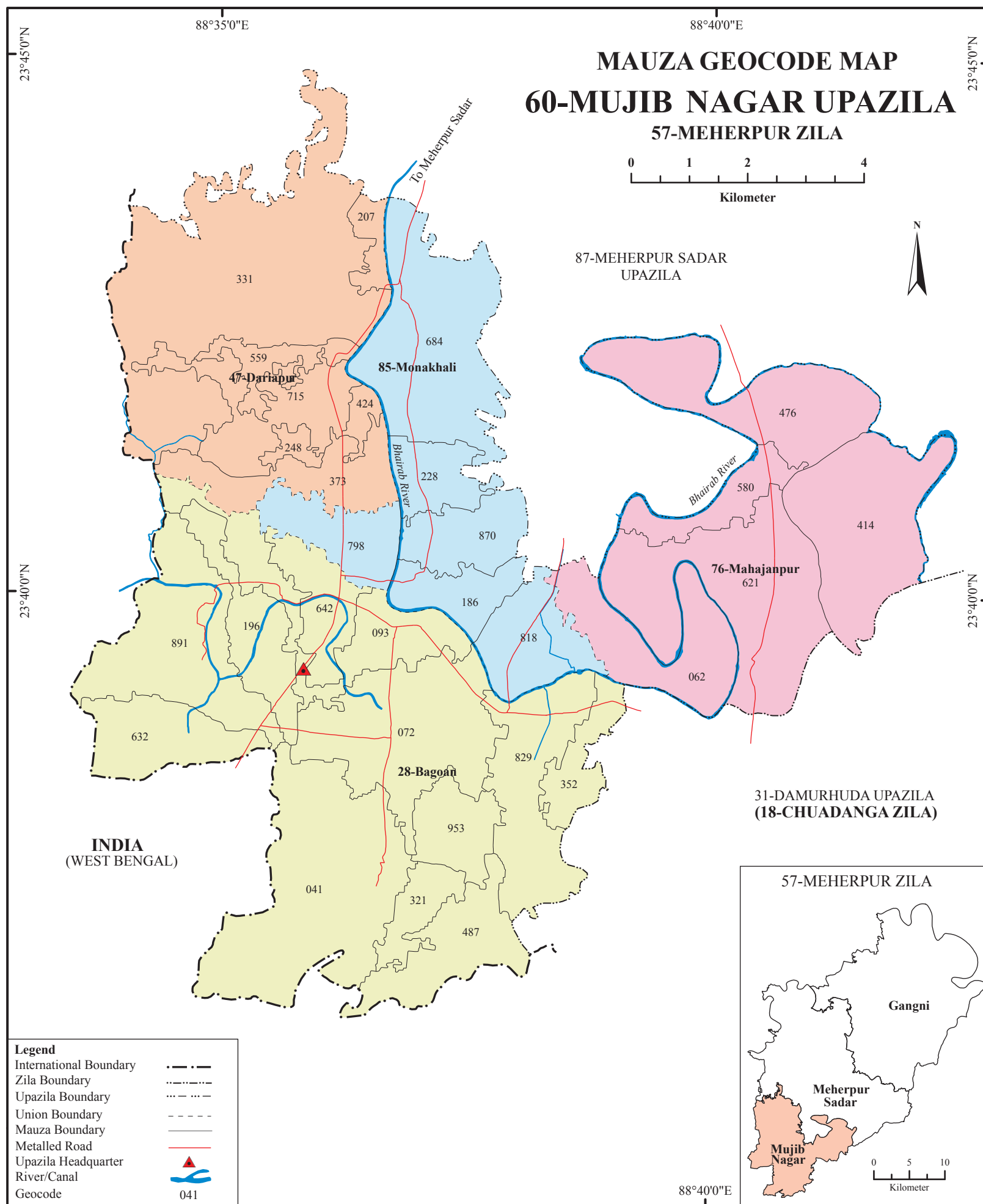
UNION CODE	MAUZA GEOCODE	NAME	AREA (acres)	H/H	POP ⁿ
10		Bamandi Union Total	7216	6719	26776
10	028	Alinagar	426	238	917
10	077	Baliaghata	549	914	3474
10	086	Bamandi	545	771	3103
10	151	Chak Mohabbatpur	48	-	-
10	367	Debipur	687	599	2507
10	714	Mahabbatpur	151	311	1186
10	792	Munda	786	790	3066
10	801	Nishipur	428	620	2598
10	869	Ramnagar	1461	1045	4169
10	985	Terail	2135	1431	5756
21		Dhankhola Union Total	15034	10793	41332
21	009	Ajan	921	501	2011
21	048	Arpara	987	770	2769
21	057	Bagunda	687	208	779
21	135	Ber Elangi	263	265	1088
21	173	Bhat Para	564	567	2037
21	328	Chitla	575	422	1552
21	357	Dakshin Tentulbaria	187	99	352
21	376	Dhankhola	1543	1314	4872
21	396	Dhepa	787	340	1403
21	444	Garadob	1610	1563	6260
21	531	Jalsuka	323	474	1807
21	569	Joginda	525	820	3274
21	618	Kasba	2081	1152	4448
21	676	Kuchuikhali	796	527	2052
21	724	Mahishakhola	369	360	1457
21	811	Nityanandapur	1219	188	686
21	830	Pakuria	529	505	1857
21	917	Sanghat	1068	718	2628
42		Kathuli Union Total	8211	5850	22379
42	193	Bil Dhala	5303	1693	6606
42	434	Garabaria	1077	1602	6354
42	637	Kathuli	470	489	1716
42	734	Mailmari	470	692	2542
42	821	Noapara	377	986	3665
42	898	Sahagalpur	514	388	1496
52		Kazipur Union Total	8771	10152	39811
52	144	Betbaria	2903	3248	12896
52	154	Bhabanipur	535	864	3265
52	212	Chak Charalkhali	181	-	-
52	473	Harabhanga	1731	2007	7853
52	647	Kazipur	3421	4033	15797
63		Matmura Union Total	11709	11446	44609
63	019	Akubpur	734	880	3346
63	106	Baot	510	977	3988
63	280	Char Abari	52		
63	289	Char Rajanagar	140		
63	318	Chhatian	912	1190	4692
63	347	Dakshin Char Goalgram	224	89	306
63	338	Dakshin Char Khalisakundi	203		
63	521	Hogalbaria	1349	1470	5748
63	589	Kamarkhali	336	523	1856
63	666	Kodalkati	949	940	3955
63	695	Kumaridanga	368	191	755
63	763	Matmura	1688	1513	5870

UNION CODE	MAUZA GEOCODE	NAME	AREA (acres)	H/H	POP ⁿ
63	782	Mohammadpur	1883	1950	7709
63	840	Paschim Char Goalgram	1352	1182	4276
63	850	Purba Char Goalgram	246		
63	966	Sindur Kauta	480	541	2108
63	994	Uttar Char Khalisakundi	283		
69		Roypur Union Total	6214	5433	20665
69	115	Bara Bamandi	382	240	831
69	260	Chandpur	370	566	2205
69	309	Chhota Bamandi	66	238	846
69	405	Dulalnagar	342	34	154
69	415	Elangi	788	427	1639
69	454	Gopalnagar	728	564	2232
69	483	Hariadaha	1236	631	2456
69	492	Gazaria Hemayetpur	267	261	962
69	598	Karaigachhi	98	526	1972
69	879	Roypur	1333	1395	5291
69	908	Saldaha	604	551	2077
73		Shaharbari Union Total	6984	6082	23139
73	164	Bhamradaha	1075	982	3695
73	386	Dharmachaki	377	453	1802
73	502	Hijalbaria	1510	893	3239
73	560	Jor Pukhuria	702	810	3057
73	685	Kulbaria	250	337	1215
73	946	Shaharbari	3070	2607	10131
84		Shola Taka Union Total	7046	6431	24533
84	038	Amtail	115	456	1831
84	067	Bahilagari	134		
84	125	Bene Pukur	205	511	1786
84	183	Bholadanga	378	648	2358
84	202	Chak Amtail	62	65	247
84	222	Chak Elangi	52		
84	241	Chak Kunjangar	69		
84	270	Changra	681	687	2647
84	540	Jhor Para	204	107	421
84	550	Jogir Khop	787	406	1549
84	627	Kastadaha	703	558	2135
84	656	Keshabnagar	78	170	646
84	705	Kunjanagar	17	120	441
84	743	Manik Dehigura	106	52	200
84	753	Manik Dighi	648	493	1950
84	772	Mina Para	588	634	2480
84	888	Raurkandi	96	180	702
84	927	Saorabaria	1108	676	2719
84	956	Shola Taka	1015	668	2421
94		Tentulbaria Union Total	8390	8186	30863
94	231	Chak Kalyanpur	107	132	477
94	463	Gosaidubi	96	140	537
94	511	Hinda	1665	769	2821
94	579	Kalyanpur	900	734	2791
94	608	Karamdi	2670	2867	10993
94	859	Ramdebpur	782	516	1899
94	937	Sheoratala	401	922	3457
94	975	Tentulbaria	1769	2106	7888
		Gangni Paurashava	4238	6488	25500
		Gangni Upazila Total	83813	77580	299607



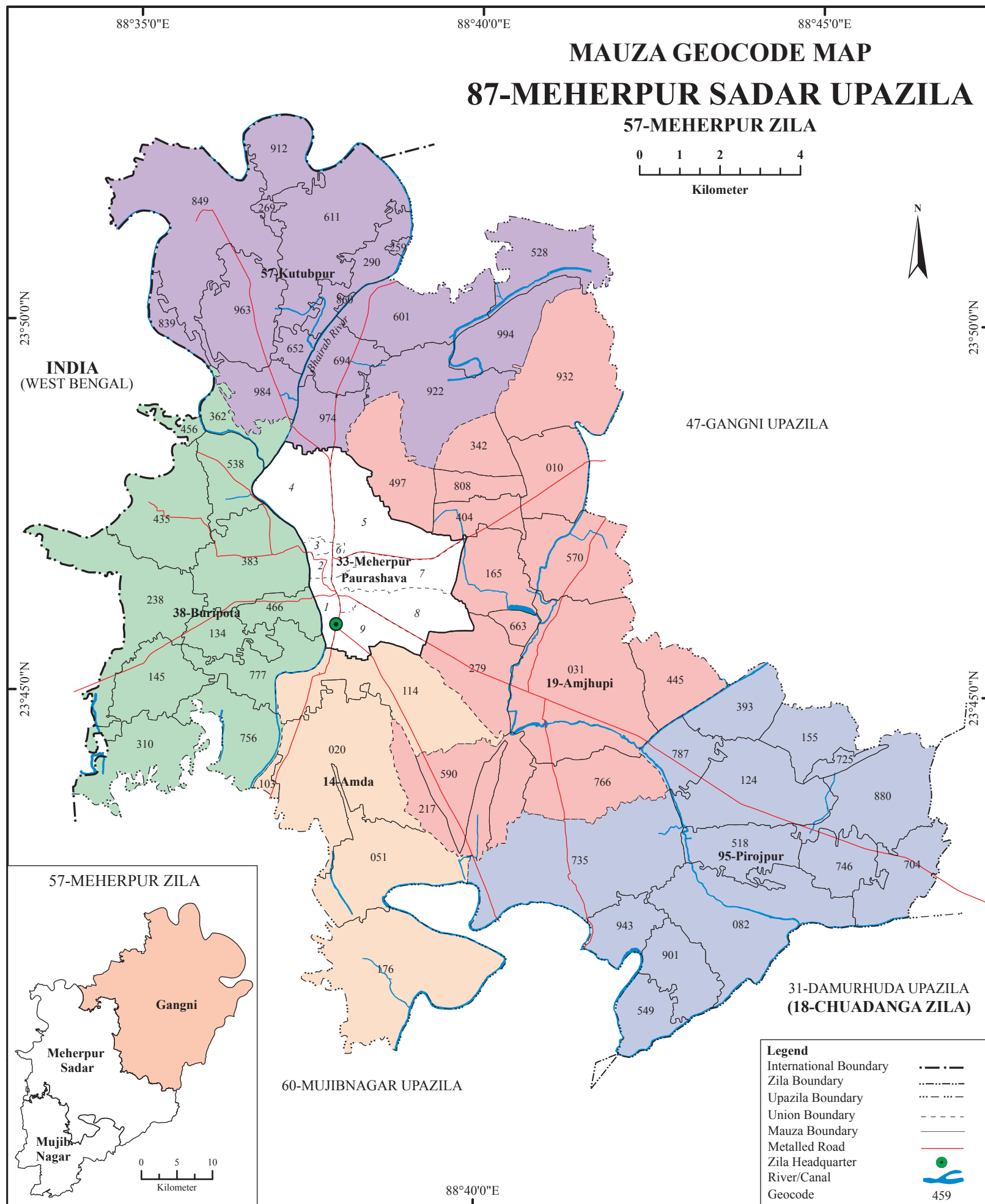
60-MUJIB NAGAR UPAZILA ATTRIBUTES
(UNION, MAUZA GEOCODE, AREA, HOUSEHOLD AND POPULATION)

UNION CODE	MAUZA GEOCODE	NAME	AREA (acres)	H/H	POP ⁿ
28		Bagoan Union Total	11204	9848	39707
28	041	Anandabas	2273	2393	9646
28	072	Bagoan	1555	1319	5321
28	093	Ballabhpur	996	728	2895
28	196	Bhabar Para	647	1197	4814
28	321	Dari Jaganthpur	337	41	139
28	352	Dholmari	325	299	1148
28	487	Joypur	785	782	3389
28	632	Majh Para	703	372	1385
28	642	Maniknagar	523	574	2312
28	829	Ratanpur	1081	432	1749
28	891	Sonapur	1491	1125	4648
28	953	Taranagar	488	586	2261
47		Dariapur Union Total	5816	4962	19629
47	207	Bidyadharpur	177	700	2723
47	331	Dariapur	3530	1916	7562
47	373	Gaurinagar	734	708	2907
47	424	Gopinathpur	110	339	1283
47	559	Khanpur	299	472	1894
47	715	Parandarpur	365	827	3260
76		Mahajanpur Union Total	6400	4691	19127
76	062	Babupur	954	495	2048
76	414	Gopalpur	1587	869	3516
76	476	Jatarpur	1409	1130	4606
76	580	Kamarpur	457	1018	4108
76	621	Mahajanpur	1993	1179	4849
85		Monakhali Union Total	4624	5101	20680
85	186	Bhabanipur	462	305	1166
85	228	Bishwanathpur	433	728	2780
85	684	Monakhali	1787	1596	6656
85	798	Ramnagar	596	995	4015
85	818	Rashikpur	759	532	2185
85	870	Shibpur	587	945	3878
		Mujib Nagar Upazila Total	28044	24602	99143



87-MEHERPUR SADAR UPAZILA ATTRIBUTES
(UNION, MAUZA GEOCODE, AREA, HOUSEHOLD AND POPULATION)

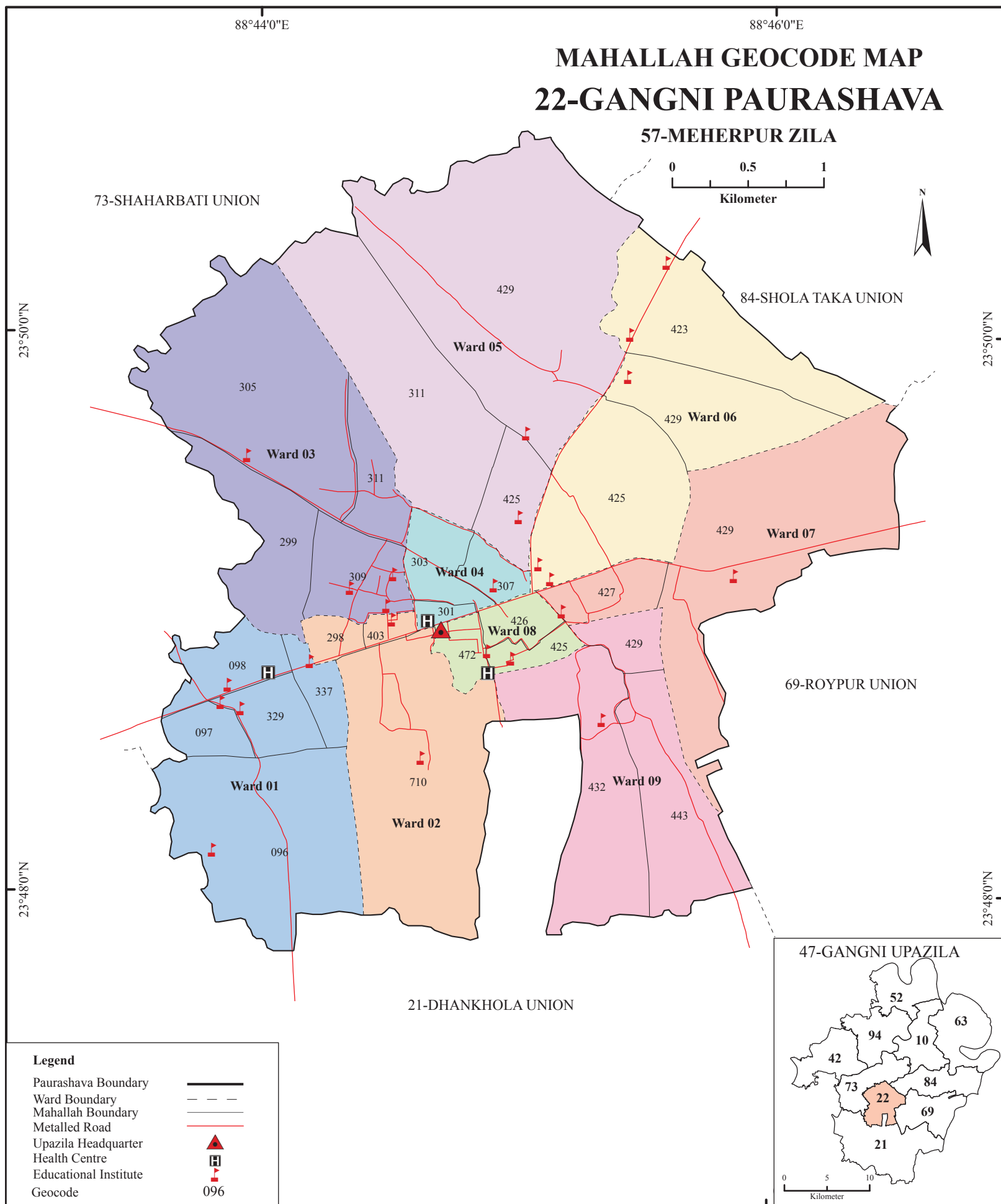
UNION CODE	MAUZA GEOCODE	NAME	AREA (acres)	H/H	POP ^a
14		Amda Union Total	8116	7611	30600
14	020	Amda	2342	1766	7162
14	051	Ashrafpur	1409	1568	6318
14	103	Baman Para Chak	90	30	119
14	114	Baman Para	1996	2714	11007
14	176	Bhabanandapur	2279	1533	5994
19		Amjhupi Union Total	15486	14011	54586
19	010	Alampur	905	622	2455
19	031	Amjhupi	2844	2869	11374
19	165	Basantapur	1065	659	2551
19	217	Bilkala	777		
19	279	Chand Bil	1064	932	3671
19	342	Dhantala	528	179	646
19	377	Islamnagar	416	582	2376
19	404	Gopalpur	461	657	2600
19	445	Hijli	785	672	2550
19	497	Jhaubaria	728	1189	4545
19	570	Khoksa	1217	966	3888
19	590	Kola	1100	1197	4804
19	663	Mayamari	177	476	1999
19	766	Raghunathpur	1126	627	2507
19	808	Ramnagar	348	382	1416
19	932	Shyampur	1945	2002	7204
38		Buripota Union Total	9920	9331	37458
38	134	Barakpur	506	669	2673
38	145	Baribaka	903	1024	3996
38	238	Buripota	1573	1146	4466
38	310	Dakshin Salika	1022	971	3864
38	362	Fatehpur	474	570	2224
38	383	Gobipur	1312	1443	6088
38	435	Harirampur	1275	879	3612
38	456	Ichhakhali	149	452	1797
38	466	Jadabpur	386	377	1502
38	538	Kamdebpur	634	439	1718
38	756	Radhakantapur	908	831	3446
38	777	Rajapur	778	530	2072
57		Kutubpur Union Total	13556	11089	42511
57	259	Chak Kutubpur	42	361	1348
57	269	Chak Subharajpur	75		
57	290	Chandpur	567	306	1179
57	528	Kali Gangni	949	839	3469
57	601	Kulberia	1079	1069	4019
57	611	Kutubpur	1945	1451	5317
57	652	Manoharpur Chak	218		
57	694	Manoharpur	612	551	2097
57	839	Rudranagar	241	342	1410
57	849	Saulmari	2504	1742	6649
57	860	Shibpur	23	231	956
57	912	Shubharajpur	644	646	2555
57	922	Subidpur	1465	1134	4300
57	963	Teragharia	1062	740	2787
57	974	Ujjalpur	596	1170	4548
57	984	Ujalpur Chak	660		
57	994	Uttar Salika	874	507	1877
95		Pirojpur Union Total	13953	11670	48354
95	082	Baliarpur	2214	1587	6521
95	124	Baradi	1498	1051	4194
95	155	Barshibari	672	751	3048
95	393	Joginda	688	304	1273
95	518	Kalaidanga	755	678	2682
95	549	Kanthalpota	603	612	2446
95	704	Nutan Darbespur	874	678	2736
95	725	Patapuka	152	90	345
95	735	Pirojpur	2694	2753	12222
95	746	Puran Darbeshpur	604	455	1791
95	787	Rajnagar	533	1022	4096
95	880	Singhati	1340	886	3702
95	901	Sonapur	746	555	2327
95	943	Tangi	580	248	971
		Meherpur Paurashava	3366	10418	43133
		Meherpur Sadar Upazila Total	64397	64130	256642



Paurashava Geocode Maps

22-GANGNI PAURASHAVA ATTRIBUTES
(WARD, MAHALLAH GEOCODE, AREA, HOUSEHOLD AND POPULATION)

WARD CODE	MAHALLAH CODE	NAME	AREA (Acres)	HOUSEHOLD	POPULATION
01		Ward 01 Total	498	702	2769
01	096	Banshbaria Dakshin Para		214	935
01	097	Banshbaria Paschimpara		110	427
01	098	Banshbaria Uttarpara		192	730
01	329	Banshbaria Purbapara		114	411
01	337	Jhinirpul Para		72	266
02		Ward 02 Total	432	831	3102
02	298	Chuagachha Cinema Hallpara		150	581
02	403	Gangni Degree College Para		60	226
02	710	Shishir Para		621	2295
03		Ward 03 Total	651	942	3603
03	299	Chaugachha Cristian Para		333	1316
03	305	Chaugachha Paschimpara		256	939
03	309	Chaugachha School Para		282	1090
03	311	Chaugachha Bhita Para		71	258
04		Ward 04 Total	102	752	3096
04	301	Chaugachha Hospitalpara		359	1488
04	303	Chaugachha Jame Masjidpara		177	741
04	307	Chaugachha Purbapara		216	867
05		Ward 05 Total	961	661	2618
05	311	Chaugachha Bhita Para		78	312
05	425	Gangni Uttarpara		194	770
05	429	Paschim Malshadah (Part)		389	1536
06		Ward 06 Total	576	601	2301
06	423	Fataipur		132	537
06	425	Gangni Eidga & Doapara		378	1435
06	429	Paschim Malshadah (Part)& Para		91	329
07		Ward 07 Total	474	798	3158
07	427	Gangni Bhita Para		364	1467
07	429	Purba Malshadah		434	1691
08		Ward 08 Total	98	619	2526
08	425	Gangni Bagan Para		179	710
08	426	Gangni Bazarpara		247	1101
08	472	Gangni Upazila Chattar		193	715
09		Ward 09 Total	446	582	2327
09	429	Purba Malsadaha Olipara		44	165
09	432	Gangni Mathpara		394	1604
09	443	Gangni Thana Para		144	558
Gangni PaurashavanTotal			4238	6488	25500



33-MEHERPUR SADAR PAURASHAVA ATTRIBUTES

(WARD, MAHALLAH GEOCODE, AREA, HOUSEHOLD AND POPULATION)

WARD CODE	MAHALLAH CODE	NAME	AREA (Acres)	HH	POP ⁿ	WARD CODE	MAHALLAH CODE	NAME	AREA (Acres)	HH	POP ⁿ
01		Ward 01 Total	194	1446	6242	05	280	Dighirpar Extension		282	1084
01	180	Bosepara Dakshin		118	511	05	650	Mondal Para North/Keshob Para		104	429
01	200	Dakshin Ghatpara		112	485	05	852	Hathat Para		138	549
01	271	Court Para		84	533	05	969	Wapda Para		100	450
01	429	Ghosh Para		457	1850	06		Ward 06 Total	98	856	3515
01	450	Kasaripara		86	384	06	090	Bara Bazar Para		145	629
01	460	Mission Para		54	197	06	250	Uttar Garpara		125	468
01	814	Natun Para		227	881	06	300	Kashyab Para		231	922
01	881	Peada Para		245	1102	06	380	Girls' College Para		35	195
01	910	Puraton Post Office Para		63	299	06	523	Mondal Para		243	979
02		Ward 02 Total	87	925	4132	06	947	Uttar Fauzdari Para/Towan Hall		77	322
02	045	Bara Bazar Para		71	447	07		Ward 07 Total	516	1510	6134
02	180	Bospara		52	203	07	290	Civil Surgeon Para		234	934
02	268	Dakshin Mukherjee Para		192	744	07	310	Dakshin Girls' College Para		88	384
02	350	Govt. Girls' School Para		108	470	07	339	Dighir Para (Police Line)		342	1374
02	400	Halder Para		263	1206	07	407	Dakshin Fauzdari Para		126	507
02	600	Methar Para		70	323	07	497	Hotel Bazar Para		57	235
02	904	Shahji Para		38	196	07	587	Kashari Para		97	405
02	954	Thana Para		25	110	07	610	Mallik Para(Nazrul Sarak Uttar		462	1883
02	990	Uttar Ghatpara		106	433	07	655	Prantik Cinema Hall Para		51	220
03		Ward 03 Total	59	813	3353	07	660	Uttar Shahid Arzoo Sarak		53	192
03	158	Dakshin Berpara		340	1345	08		Ward 08 Total	550	963	4114
03	200	Dakshin Khan Para		53	220	08	180	Bus Stand Para		287	1191
03	249	Dakshin Tanti Para		187	774	08	200	Dakshin Shahid Aroje Sarak		52	240
03	260	Danga Para		31	136	08	339	Govt. College Para		89	386
03	768	Mukharjee Para		61	263	08	400	Hotel Bazar Masjid Para		91	415
03	904	Shahji Para		40	152	08	497	Hotel Bazar Para		75	398
03	949	Uttar Thana Para		101	463	08	790	Pashu Hospital Para		114	448
04		Ward 04 Total	703	1475	6150	08	796	Public Library		175	720
04	045	Kathuli Sarak North		343	1316	08	874	Para/P.Bhum.Off		80	316
04	158	Uttar Berpara		51	200	09		Ward 09 Total	384	1458	5629
04	350	Ful Bagan Para		129	560	09	205	Circuit House Para		130	519
04	452	Hathat Para		76	341	09	271	Court Para		132	497
04	520	Kala Chandpur		398	1663	09	274	Dakshin Stadium Para		258	965
04	610	Math Para		84	315	09	514	Gurasthan Para		257	1049
04	727	Seikh Para		235	1070	09	550	Post Office Para		302	1102
04	850	Uttar Tanti Para		47	192	09	600	Puratan Math Para		147	496
04	900	Uttar Khan Para		112	493	09	710	Shishutala Para		232	1001
05		Ward 05 Total	775	972	3864			Meherpur Paurashava Total	3366	10418	43133
05	158	Berpara		142	558						
05	180	B.A.D.C. Para		54	188						
05	203	Chakra Para		152	606						

